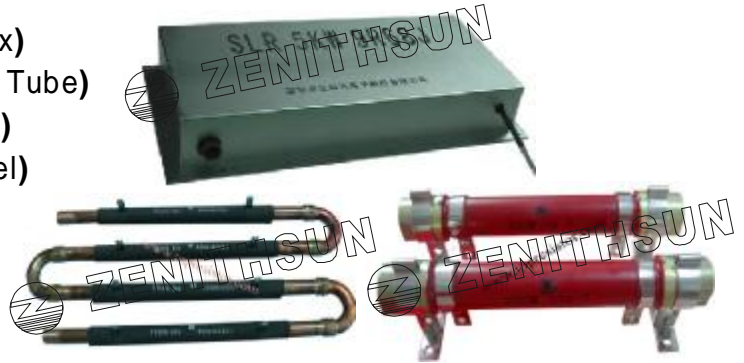


Water Cooled Resistors

TYPE A: SLR-AI Series (Aluminum Box)
TYPE B: SLR-BCT Series (Brass Copper Tube)
TYPE C: SLR-CT Series (Ceramic Tube)
TYPE D: SLR-SS Series (Stainless Steel)

Power Rating: 200W-1KKW
Resistance Value: 0.1Ω-100KΩ
Resistance Tolerance: ±0.1%~±10%



ZENITHSUN is the earliest water cooled resistor manufacturer in Pearl River Delta, owning professional R&D and production team. Including aluminum box-type water cooled resistor, stainless steel water cooled resistor, brass copper tube water cooled resistor, ceramic tube water cooling resistor etc. ZENITHSUN has successfully provided water cooled resistor for Sungrow Power Supply Co., Ltd., Inductotherm Group China, BYD Company Limited, China Electric Power Research Institute and other famous enterprises. The water cooled resistor of ZENITHSUN, most types, best quality with the most reasonable price and fast delivery.

● Construction:

1. ZENITHSUN is the first professional manufacture producing the water cooled resistor, many types are available, ceramic tube series, brass copper tube series and aluminum box series. The water cooled resistor box or cabinet are available (according to the power rating).
2. The resistor applied high quality special resistor material, the resistor cavity is from by the special frame which provides the room making the purity industrial water flow through it, the water taking away the working heat.
3. The connector for in and out of water, for non-standard technical size requirements and custom special installation, please contact us to discuss the details.
4. For non-standard technical requirements and custom special applications, please contact us to discuss the details.

● Features:

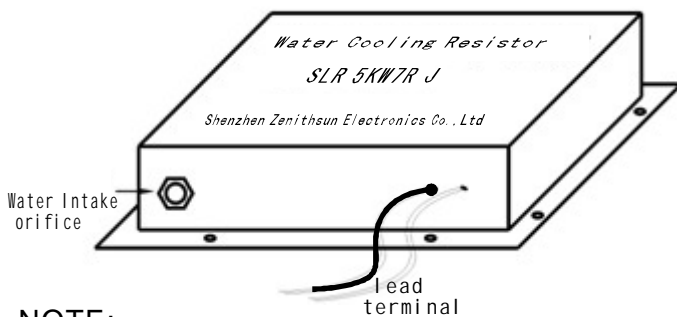
1. ZENITHSUN water cooled resistor owning great electrical characteristics, solid structure, safety, easy installation, low temperature, high power, great insulation, stability and durable, ect.
2. As the ordinary tap water as cooling carrier, eliminating the traditional way of deionized water high cost.
3. For non-standard technical requirements and custom special applications, please contact us to discuss the details.
4. Delivery: 10-15 days.

● Applications:

1. Used as bypass current, voltage and load in the high power circuit.
2. Used as energy absorption.

3. widely used in machinery and equipment, load, furnace, smelting, wind power and solar power and other industries, For non-standard technical requirements and custom special applications, please contact us to discuss the details.
4. Be used in the SVC's control valve or HVDC's thyristor converter valve.

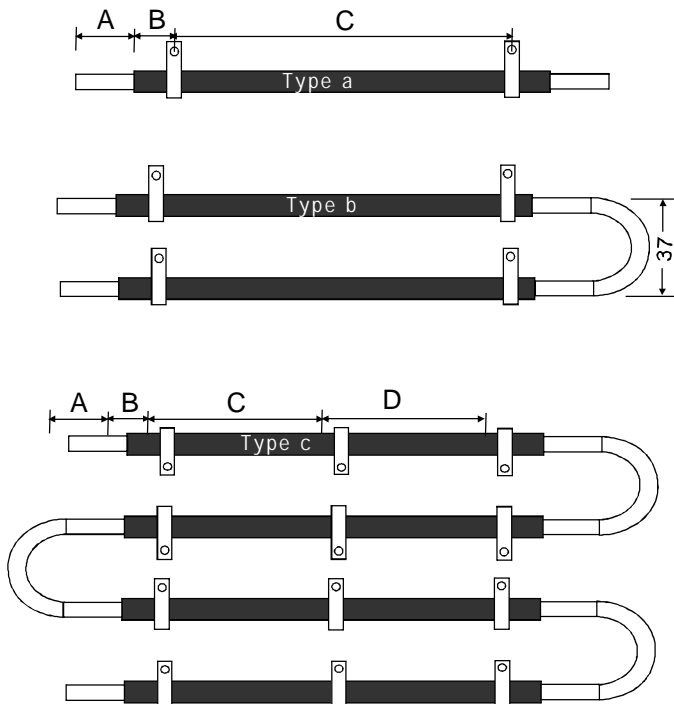
TYPE A: Aluminum Box Series



NOTE:
Outlet water orifice is on the back of aluminum enclosure.

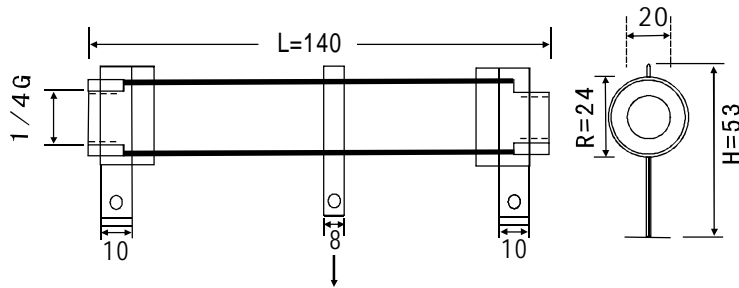
1. Power Rating: 500W-1KKW
2. Resistance Value: 0.1Ω-100KΩ
3. Resistance Tolerance: ±0.1%~±10%
4. Inductance: inductive and non-inductive
5. Insulation and dielectric withstanding voltage : ≥3500V (Single resistor)
6. Surface Temperature ≤125°C
7. Dimension and profile design are available
8. Single resistor maximum power : 10KW above 10kw , using combined(parallel or series connection)

TYPE B: Brass Copper Tube Series



1. Power Rating: 200W-1KKW
2. Resistance Value: 0.1Ω-100KΩ
3. Resistance Tolerance: ±0.1%~±10%
4. Inductance: inductive and non-inductive
5. Insulation and dielectric withstanding voltage : ≥2500V (Single resistor)
6. Surface Temperature ≤125°C
7. Single resistor maximum power : 2KW above 2KW , using combined(parallel or series connection)
8. Copper tube diameter: φ 12.7, φ 19
9. Copper tube wall thickness: 1.0
10. Dimension and profile design are available

TYPE A: Ceramic Tube Series



Note: Assembly method (mounts or no mounts)

1. Power Rating: 500W-1000W
2. Resistance Value: 5Ω-100Ω
3. Resistance Tolerance: ±5%~±10%
4. Working Voltage: 300V

● **Other Types**



For more types, please contact us for the details.

● **Water cooled condition**

1. Running water
2. Maximum input water temperature $\leq 40\text{ }^{\circ}\text{C}$
3. Maximum output water temperature $\leq 80\text{ }^{\circ}\text{C}$

● **Installation and application**

Water Intake orifice in the below and the outlet water orifice in the above

● **Cooled Water Flow**

Power Rating	Cooled Water Flow
$\leq 0.5\text{KW}$	$\geq 5\text{L/MIN}$
5KW -10KW	$\geq 8\text{L/MIN}$
10KW -20KW	$\geq 15\text{L/MIN}$
20KW -30KW	$\geq 20\text{L/MIN}$
30KW -40KW	$\geq 30\text{L/MIN}$
40KW -50KW	$\geq 40\text{L/MIN}$
50KW -60KW	$\geq 50\text{L/MIN}$
60KW -70KW	$\geq 60\text{L/MIN}$
70KW -80KW	$\geq 70\text{L/MIN}$
80KW -90KW	$\geq 80\text{L/MIN}$
90KW -100KW	$\geq 90\text{L/MIN}$
$\geq 100\text{KW}$	$\geq 100\text{L/MIN}$

● **How To Order**

SRLA	10W	100K Ω	K
①	②	③	④

- ① Type: Type A, Type B, Type C
- ② Rated Power (W): 200W-1KKW
- ③ Resistance Value (Ω): 0.1 Ω -100K Ω
- ④ Tolerance (%): $\pm 0.1\%$ ~ $\pm 10\%$